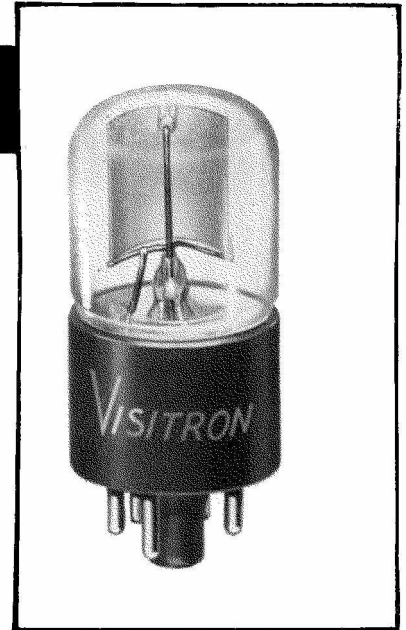


VISITRON

R64 SERIES

A rugged, dependable tube in a short glass envelope. This tube is recommended for industrial light operated relay and measurement applications where space is a limiting factor.



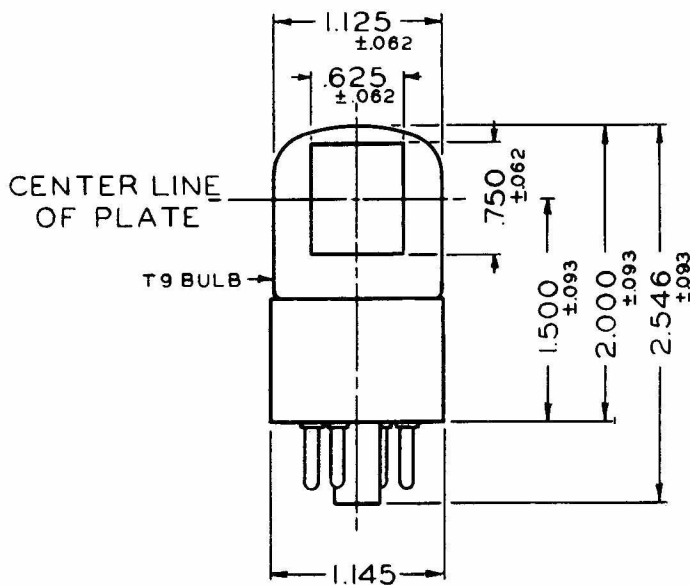
TYPE R64

GENERAL CHARACTERISTICS

	R64A	R64AV
Cathode Surface.....	S1	S1
Cathode Size.....	.750" x .265"	.750" x .265"
Capacitance (Anode-Cathode).....	2.5 MMF.	2.0 MMF.
Leakage Resistance (Min).....	1000 Meg.	1000 Meg.

MAXIMUM RATINGS

	R64A	R64AV
Anode Voltage, Peak.....	90V	500V
Luminous Sensitivity.....	200 μ A/L DC	37 μ A/L DC
Luminous Sensitivity (25v).....	35 μ A/L DC	35 μ A/L DC
Gas Amplification.....	10	--
Temperature ambient.....	100°C	100°C



DIRECTION OF LIGHT

