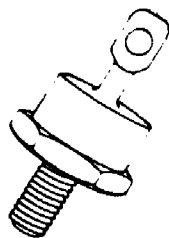


New Jersey Semi-Conductor Products, Inc.

20 STERN AVE.  
 SPRINGFIELD, NEW JERSEY 07081  
 U.S.A.

TELEPHONE: (973) 376-2922  
 (212) 227-6005  
 FAX: (973) 376-8960

UES804-UES806  
**RECTIFIERS**  
 High Efficiency, 50A



**ABSOLUTE MAXIMUM RATINGS**

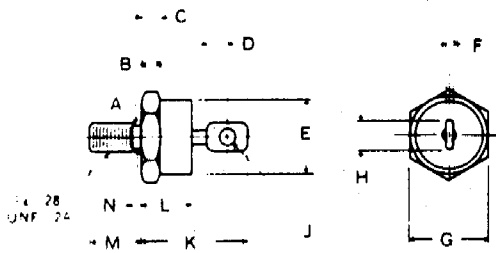
Peak Inverse Voltage, UES804	200V
Peak Inverse Voltage, UES805	300V
Peak Inverse Voltage, UES806	400V
Maximum Average D.C. Output Current @ $T_C = 100^\circ\text{C}$	50A
Surge Current, 8.3mSec	600A
Thermal Resistance, Junction to Case	.8°C/W
Operating and Storage Temperature Range	-55°C to +150°C

**ELECTRICAL SPECIFICATIONS**

Type	PIV	Maximum Forward Voltage		Maximum Reverse Current		Maximum Reverse Recovery Time*
		$T_C = 25^\circ\text{C}$	$T_C = 125^\circ\text{C}$	$T_C = 25^\circ\text{C}$	$T_C = 125^\circ\text{C}$	
UES804	200V	1.25V	1.15V	70 $\mu$ A	30mA	50nS
UES805	300V	@ $I_F = 50\text{A}$	@ $I_F = 50\text{A}$			
UES806	400V	$t_p = 300\mu\text{S}$	$t_p = 300\mu\text{S}$			

\* Measured in circuit  $I_F = 0.5\text{A}$ ,  $I_R = 1\text{A}$ ,  $I_{\text{REC}} = 0.25\text{A}$

**MECHANICAL SPECIFICATIONS**



	INS.	MM
A	225 ± .005	5.72 ± 0.13
B	060 MIN	1.52 MIN
C	156 ± .020	3.96 ± 0.51
D	156 MIN FLAT	3.96 MIN FLAT
E	667 DIA MAX	16.94 DIA MAX
F	090 MAX	2.29 MAX
G	677 ± .010	17.20 ± 0.25
H	375 MAX	9.53 MAX
J	140 MIN DIA	3.56 MIN DIA
K	1000 MAX	25.40 MAX
L	450 MAX	11.43 MAX
M	438 ± .015	11.13 ± 0.38
N	078 MAX	1.98 MAX

**Notes:**

- Standard polarity is cathode-to-stud.  
For reverse polarity (anode-to-stud) add suffix "R", ie. UES804R.
- All metal surfaces tin plated.
- Maximum unlubricated stud torque: 30 inch pounds.
- Angular orientation of terminal is undefined.

NJ Semi-Conductors reserves the right to change test conditions, parameter limits and package dimensions without notice. Information furnished by NJ Semi-Conductors is believed to be both accurate and reliable at the time of going to press. However, NJ Semi-Conductors assumes no responsibility for any errors or omissions discovered in its use. NJ Semi-Conductors encourages customers to verify that datasheets are current before placing orders.

**Quality Semi-Conductors**

