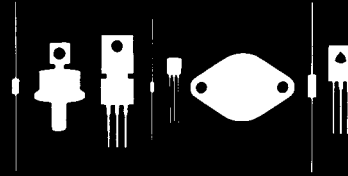


Central Semiconductor Corp.
 Central Semiconductor Corp.
 Central Semiconductor Corp.
Central Semiconductor Corp.

145 Adams Avenue
 Hauppauge, New York 11788



C2Z100B THRU C2Z330B

2.0 WATT ZENER DIODE
 100 Volts thru 330 Volts

JEDEC DO-41 CASE

DESCRIPTION

The Central Semiconductor C2Z100B Series Silicon Zener Diode is a high quality epoxy molded voltage regulator for use in industrial, commercial, entertainment and computer applications.

ABSOLUTE MAXIMUM RATINGS

Power Dissipation (@ $T_A = 50^\circ\text{C}$)
 Operating and Storage Temperature
 Tolerance "B Suffix"

SYMBOL

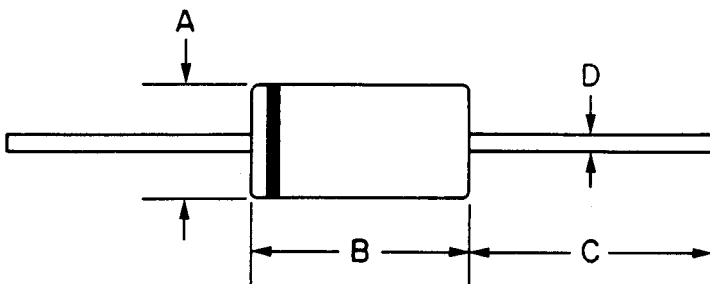
P_D 2.0
 T_J, T_{STG} -65 to $+150^\circ\text{C}$
 ± 5

UNIT

W
 $^\circ\text{C}$
 %

ELECTRICAL CHARACTERISTICS ($T_A = 25^\circ\text{C}$), $V_F = 1.2\text{V MAX @ } I_F = 1\text{A}$ FOR ALL TYPES.

| TYPE | Zener Voltage | Test Current | Maximum Zener Impedance | | | Maximum Reverse Current | | Maximum DC Current |
|---------|----------------|--------------|-------------------------|-------------------|------|-------------------------|-------|--------------------|
| | $V_Z @ I_{Z1}$ | I_{ZT} | $Z_{ZT} @ I_{ZT}$ | $Z_{ZK} @ I_{ZK}$ | | $I_R @ V_R$ | | I_{ZM} |
| | Volts | mA | Ω | Ω | mA | μA | Volts | mA |
| C2Z100B | 100 | 5.0 | 350 | 3,000 | 0.25 | 5.0 | 76.0 | 20.0 |
| C2Z110B | 110 | 4.6 | 450 | 4,000 | 0.25 | 5.0 | 83.6 | 18.2 |
| C2Z120B | 120 | 4.0 | 550 | 4,500 | 0.25 | 5.0 | 91.2 | 16.6 |
| C2Z130B | 130 | 3.8 | 700 | 5,000 | 0.25 | 5.0 | 98.8 | 15.4 |
| C2Z150B | 150 | 3.4 | 1,000 | 6,000 | 0.25 | 5.0 | 114.0 | 13.4 |
| C2Z160B | 160 | 3.2 | 1,100 | 6,500 | 0.25 | 5.0 | 121.6 | 12.6 |
| C2Z180B | 180 | 2.8 | 1,200 | 7,000 | 0.25 | 5.0 | 136.8 | 11.2 |
| C2Z200B | 200 | 2.4 | 1,500 | 8,000 | 0.25 | 5.0 | 152.0 | 10.0 |
| C2Z300B | 300 | 1.7 | 5,000 | 9,000 | 0.25 | 5.0 | 240.0 | 6.6 |
| C2Z330B | 330 | 1.5 | 5,000 | 9,000 | 0.25 | 5.0 | 260.0 | 6.0 |



EPOXY MOLDED CASE WITH TIN PLATED LEADS

| DIM | INCHES | | MILLIMETERS | |
|-----|--------|------|-------------|------|
| | MIN | MAX | MIN | MAX |
| A | .080 | .107 | 2.0 | 2.7 |
| B | .160 | .205 | 4.1 | 5.2 |
| C | 1.0 | — | 25.4 | — |
| D | .028 | .034 | 0.71 | 0.86 |