

# TA8532P, TA8532F

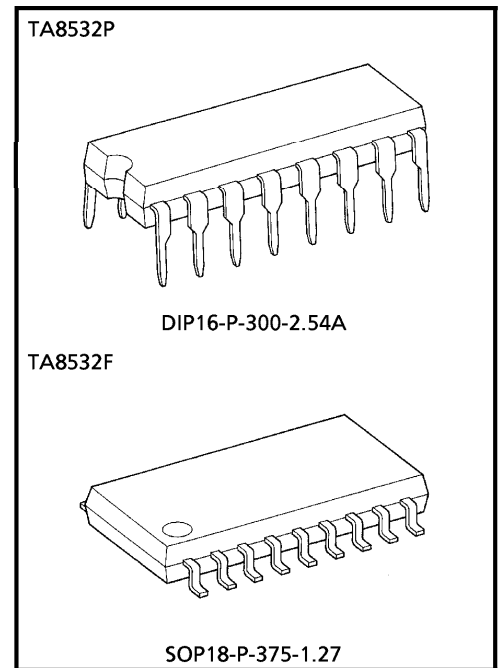
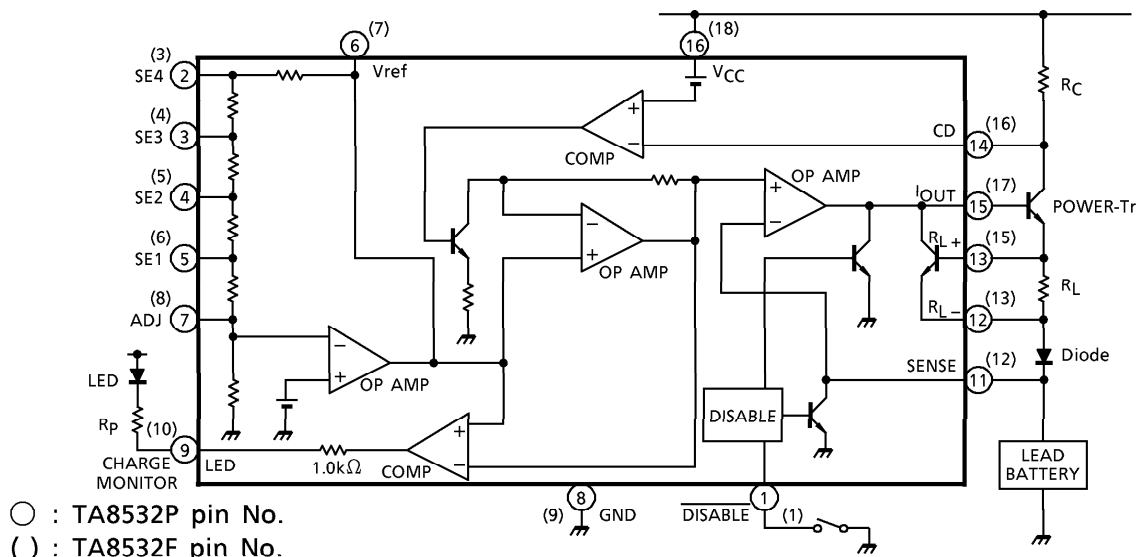
## BATTERY CHARGER IC

TA8532P, TA8532F is Battery Charger IC for Lead Batterys and applicable to various types from 1 to 6cells. Simple system with minimized external components is available.

### FEATURES

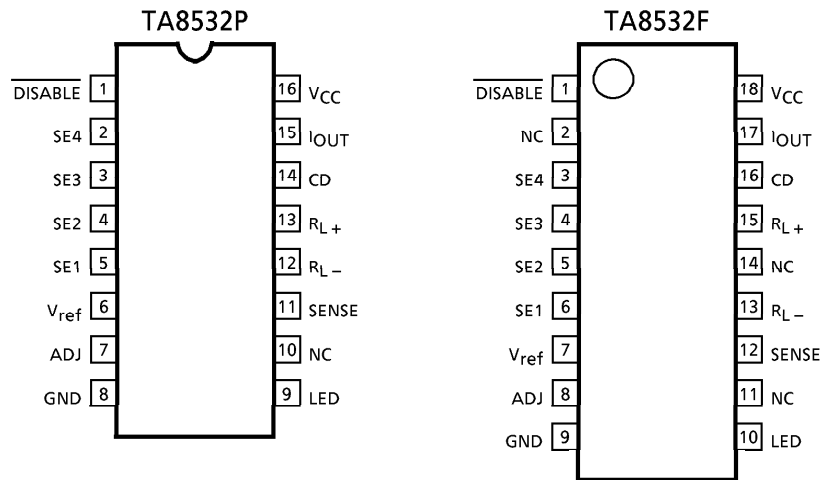
- Applicable to various types of lead battery from 1 to 6 cells utilizing selectable reference voltage.
- Reference voltage can be adjusted by external resistor.
- Charging time can be set freely by changing the external current (charging current) with the external resistor.
- Charging completion can be indicated by LED utilizing the charge monitor circuit.
- This device can be disabled externally.
- Battery discharge at power off can be protected by the reverse current protection system.

### SYSTEM BLOCK DIAGRAM



Weight DIP16-P-300-2.54A : 1.0g (Typ.)  
 SOP18-P-375-1.27 : 0.5g (Typ.)

**PIN CONNECTION (TOP VIEW)**

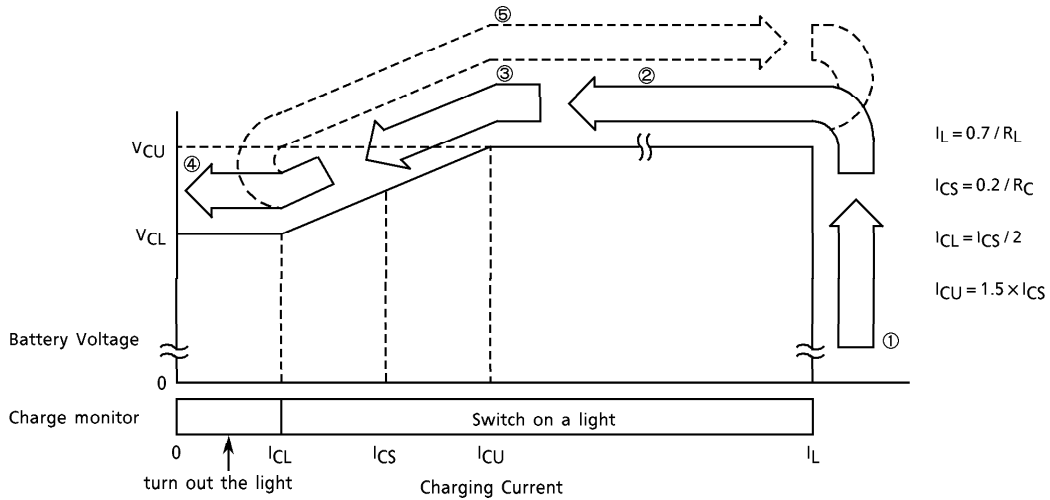


**PIN FUNCTION**

PIN No.	PIN NAME	FUNCTION
1 (1)	DISABLE	To stop charging by L input.
2 (3)	SE4	Selection terminal for 5cells connecting with $V_{ref}$ terminal.
3 (4)	SE3	Selection terminal for 4cells connecting with $V_{ref}$ terminal.
4 (5)	SE2	Selection terminal for 3cells connecting with $V_{ref}$ terminal.
5 (6)	SE1	Selection terminal for 2cells connecting with $V_{ref}$ terminal.
6 (7)	$V_{ref}$	Standard Voltage Terminal.
7 (8)	ADJ	To adjust the $V_{ref}$ terminal output. And 1cell is selected connecting with $V_{ref}$ terminal through a variable resistor.
8 (9)	GND	Ground
9 (10)	LED	For the LED indication during the charging (Output current $> I_{CL}$ ).
11 (12)	SENSE	To sense the battery output voltage.
12 (13)	$R_{L-}$	For connection with the current the limiting resistance. The limiting current is given $(0.7/R_{L-})$ .
13 (15)	$R_{L+}$	The current limiting resistor is connected between $R_{L-}$ .
14 (16)	CD	Connecting terminal for the current sense resistor and Power transistor. The resistor is to be connected to the internal current sense circuit and makes the slope $\Delta V_C / \Delta I_C$ . It is also connected to the charge monitor circuit and control lighting LED.
15 (17)	IOOUT	The charging current output terminal. The emitter of Power transistor to be connected.
16 (18)	VCC	Power Supply Voltage Terminal.

( ) : TA8532F pin No.

CHARGING PROCESS CHART



$I_L$	Determined by the external resistor $R_L$ .
$I_{CS}$	Determined by the external resistor $R_C$ .
$I_{CL}$	Almost the center between $I_{CS}$ and $0mA$ .
$I_{CU}$	Almost triple of $I_{CL}$ .
$V_{CU}$	Charging Voltage. Dependent on the number of the battery cells. Refer to the chart in the next page.
$V_{CL}$	Focusing Voltage. Dependent on the number of the battery cells. Refer to the chart in the next page.

OPERATION

- (1) As shown in the above chart, charging starts with maximum current  $I_L$  (given by the formula  $0.7 / R_L$ ) and the battery voltage increases gradually.
- (2) When the battery voltage reaches  $V_{CU}$  (Charging Voltage), the voltage is fixed at  $V_{CU}$ , that is the constant voltage charging state. And the charging current decreases gradually.
- (3) When the charging current decreases to the point of  $I_{CU}$ , the voltage starts dropping. The voltage dropping continues until the current reaches  $I_{CL}$ , and is settled at the Focusing Voltage ( $V_{CL}$ ). And the voltage dropping ratio is given by the formula  $(V_{CU} - V_{CL}) / (I_{CU} - V_{CL})$  and its center is  $V_{CS}$  and  $I_{CS}$ .
- (4) The center of the voltage dropping curve is  $I_{CS}$ , which is given by the formula  $0.2 (R_C : \text{External Resistor})$ .
- (5) LED indicates as a charging monitor during the charging current is greater than  $I_{CL}$ . When it becomes lower than  $I_{CL}$ , LED turns off for the indication of charging completion. Internal resistance is  $1k\Omega$  and external resistor is needed at  $V_{CC} \geq 15V$ .

**MAXIMUM RATINGS (Ta = 25°C)**

CHARACTERISTIC	SYMBOL	RATING	UNIT
Supply Voltage	V <sub>CC</sub>	24	V
Max. Pre-drive Output Current	I <sub>out</sub>	20	mA
Power Dissipation	TA8532P	1	W
	TA8532F	0.9	
Operating Temperature	T <sub>opr</sub>	-30~75	°C
Storage Temperature	T <sub>stg</sub>	-55~150	°C

**RECOMMENDED OPERATING CONDITION**

CHARACTERISTIC	SYMBOL	MIN.	TYP.	MAX.	UNIT	
Power Supply Voltage	V <sub>CC</sub>	1Cell Charge	9	—	20	V
		2Cells Charge	9	—	20	
		3Cells Charge	11	—	20	
		4Cells Charge	13.5	—	20	
		5Cells Charge	16	—	20	
		6Cells Charge	18.5	—	20	

**ELECTRICAL CHARACTERISTICS (Unless otherwise specified, V<sub>CC</sub> = 9~20V, Ta = 25°C)**

CHARACTERISTIC	SYMBOL	TEST CIR-CUIT	TEST CONDITION	MIN.	TYP.	MAX.	UNIT
Power Supply Current	I <sub>CC</sub>	1	V <sub>CC</sub> = 9V V <sub>CC</sub> = 20V	—	6.7 7.0	— 10	mA
Output Current	I <sub>out</sub>	2	—	20	40	—	mA
LED Output Current	I <sub>LED</sub>	3	V <sub>CC</sub> = 20V, V <sub>LED</sub> = 7V V <sub>CC</sub> = 20V, V <sub>LED</sub> = 18V	— 10	6.0 16	—	mA
Limiter Output Detection Voltage	V <sub>Lim</sub>	4	—	—	0.7	—	V
Voltage Switching Detection Voltage	V <sub>C</sub>	5	—	—	0.2	—	V
Non-adjustment Focusing Voltage Error	ΔV <sub>CL</sub>	—	V <sub>CC</sub> = 20V, V <sub>CL</sub> = 4.550V	-8	—	8	%
			V <sub>CC</sub> = 20V, V <sub>CL</sub> = 6.825V	-8	—	8	
			V <sub>CC</sub> = 20V, V <sub>CL</sub> = 9.100V	-8	—	8	
			V <sub>CC</sub> = 20V, V <sub>CL</sub> = 11.375V	-8	—	8	
			V <sub>CC</sub> = 20V, V <sub>CL</sub> = 13.650V	-8	—	8	
Non-adjustment Charging Voltage Error	ΔV <sub>CU</sub>	—	V <sub>CC</sub> = 20V, V <sub>CU</sub> = 4.90V	-10	—	10	%
			V <sub>CC</sub> = 20V, V <sub>CU</sub> = 7.35V	-10	—	10	
			V <sub>CC</sub> = 20V, V <sub>CU</sub> = 9.80V	-10	—	10	
			V <sub>CC</sub> = 20V, V <sub>CU</sub> = 12.25V	-10	—	10	
			V <sub>CC</sub> = 20V, V <sub>CU</sub> = 14.70V	-10	—	10	
Output Voltage Adjustment Width	Ara	—	—	-10	—	10	%
SENSE Terminal Reverse Current	I <sub>rev</sub>	6	—	—	0.1	10	μA
Disable Terminal "H" Voltage	V <sub>DIS H</sub>	—	—	2.0	—	—	V
Disable Terminal "L" Voltage	V <sub>DIS L</sub>	—	—	—	—	0.8	V

STANDARD VOLTAGE ADJUSTMENT

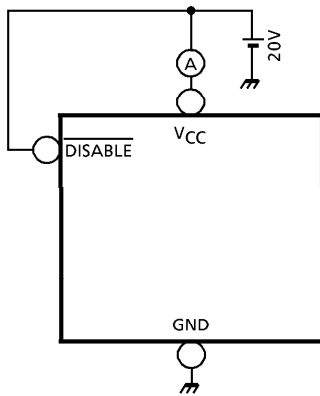
NUMBER	V <sub>CL</sub> (V)	V <sub>CU</sub> (V)	V <sub>ref</sub> TERMINAL CONNECTION
1Cell	2.275 ± 0.025	2.45 ± 0.07	V <sub>ref</sub> -ADJ
2Cells	4.550 ± 0.050	4.90 ± 0.14	V <sub>ref</sub> -SE1, ADJ
3Cells	6.825 ± 0.075	7.35 ± 0.21	V <sub>ref</sub> -SE2, ADJ
4Cells	9.100 ± 0.100	9.80 ± 0.28	V <sub>ref</sub> -SE3, ADJ
5Cells	11.375 ± 0.125	12.25 ± 0.35	V <sub>ref</sub> -SE4, ADJ
6Cells	13.650 ± 0.150	14.70 ± 0.42	V <sub>ref</sub> OPEN, ADJ

(Note 1) The ADJ terminal is to be connected through valuable resistor and controlled.

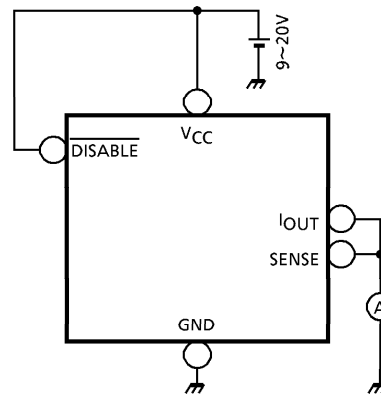
(Note 2) Adjustment is to be done in accordance with the above focusing voltage.

TEST CIRCUIT

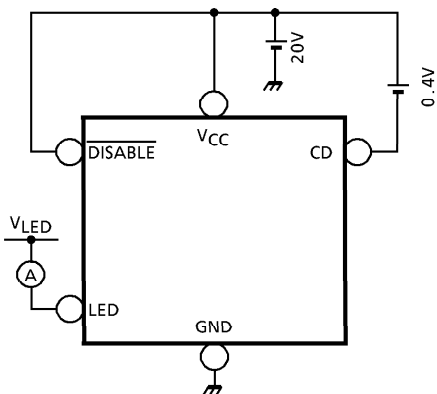
(1) I<sub>CC</sub>



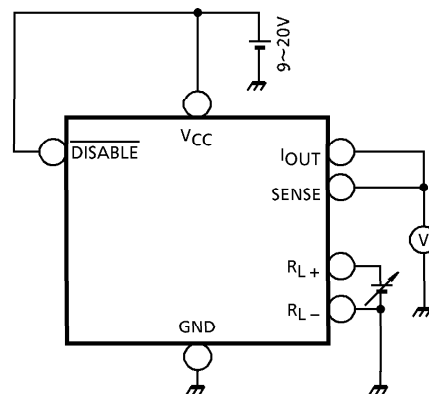
(2) I<sub>OUT</sub>



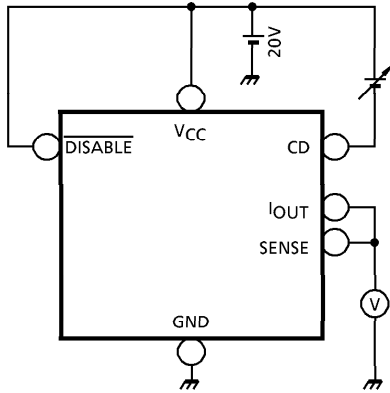
(3) I<sub>LED</sub>



(4) V<sub>Lim</sub>



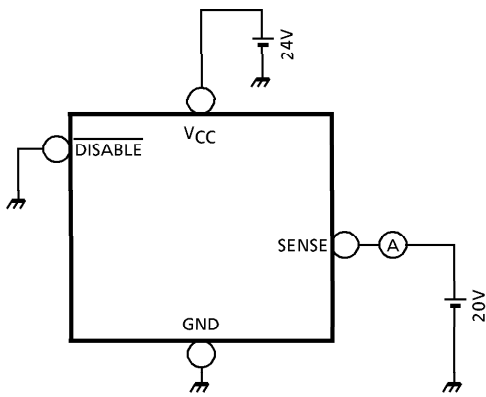
(5)  $V_C$



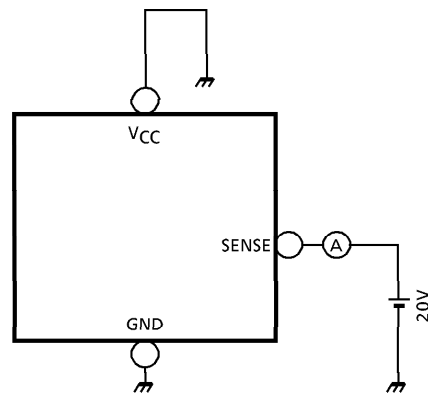
- $V_{CC-CD}$
- $V_{CH} : 0.4V$
- $V_{CL} : 0V$

(6)  $I_{rev}$

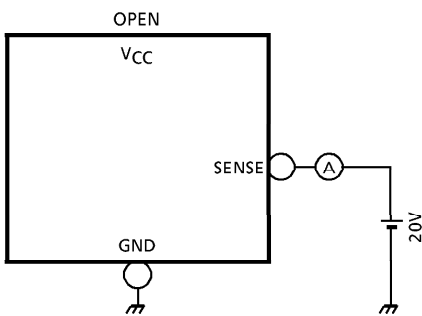
- $V_{CC} = 24V$



- $V_{CC} = GND$

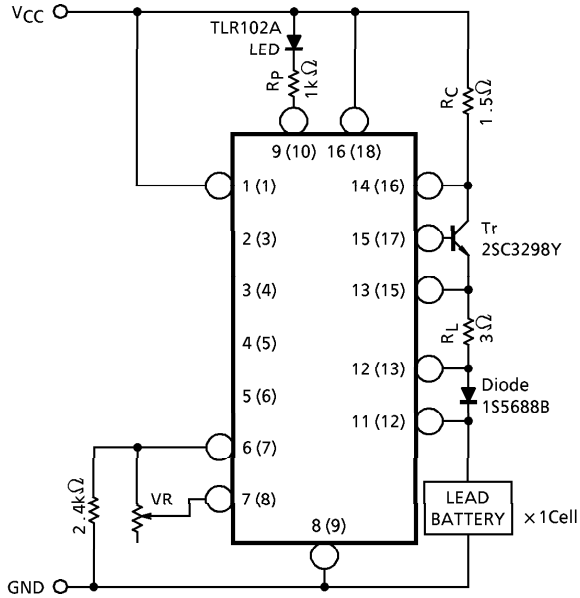


- $V_{CC} = OPEN$

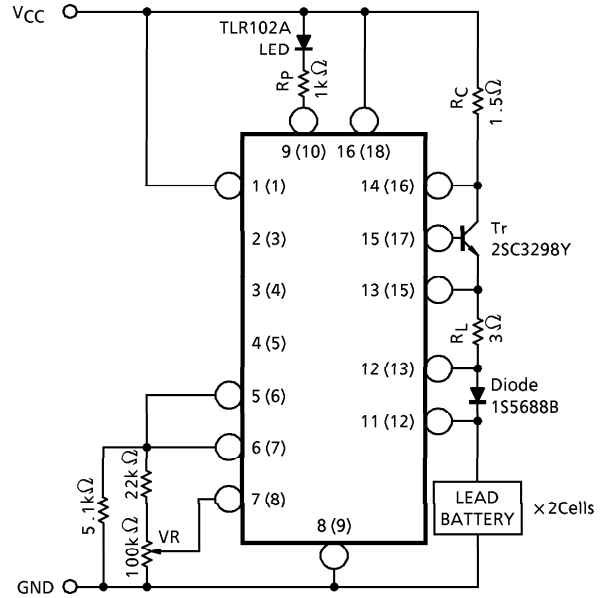


APPLICATION

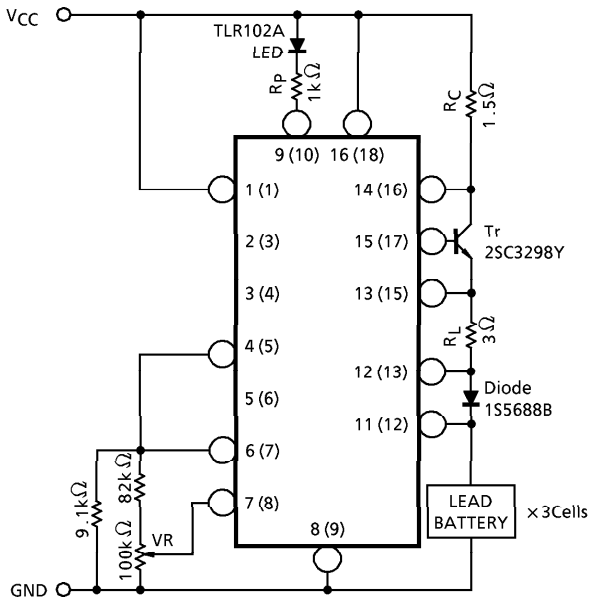
(1) 1Cell



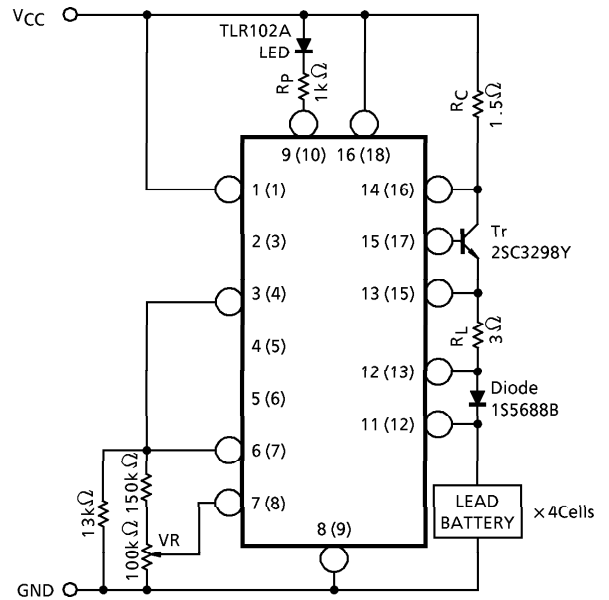
(2) 2Cells



(3) 3Cells

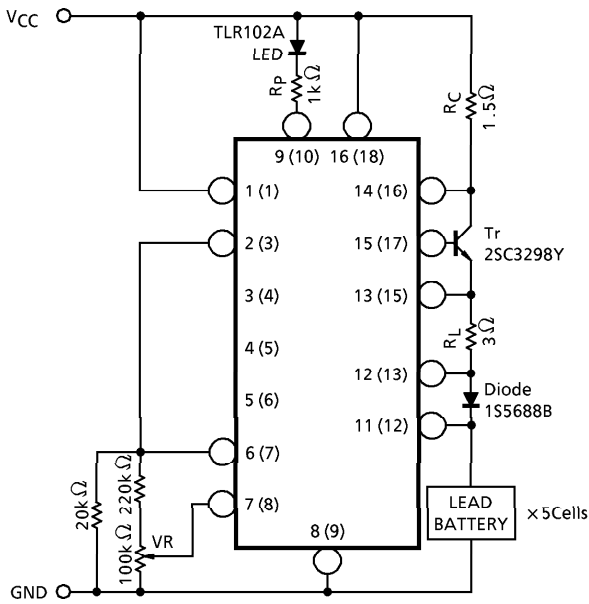


(4) 4Cells

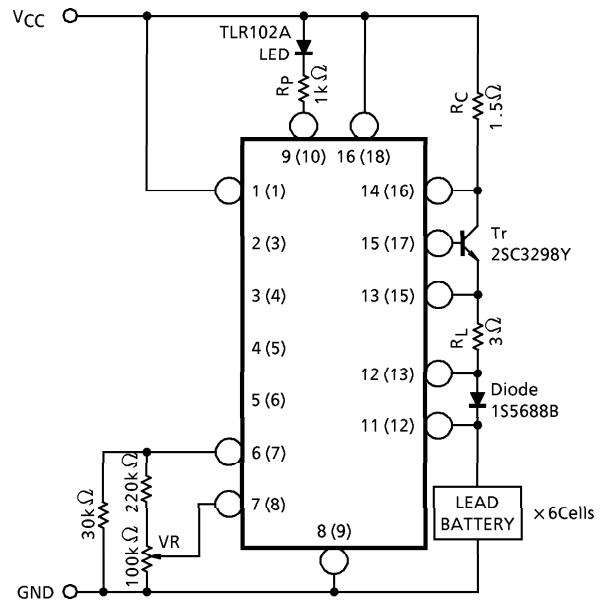


( ) : TA8532F pin No.

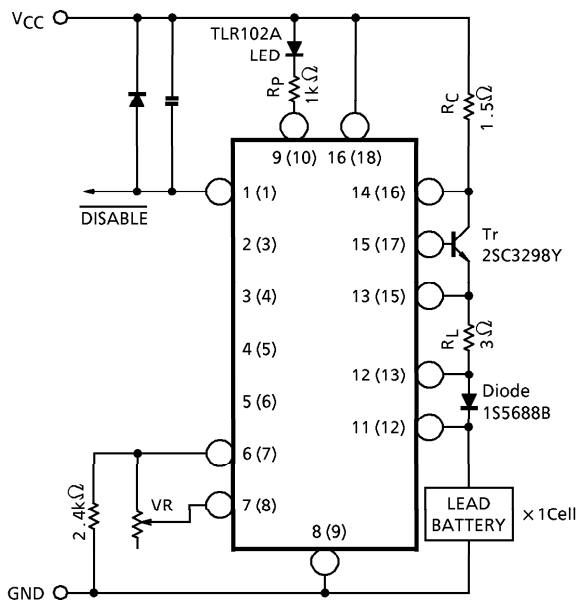
(5) 5Cells



(6) 6Cells



(7) DISABLE (ex. 1Cell)

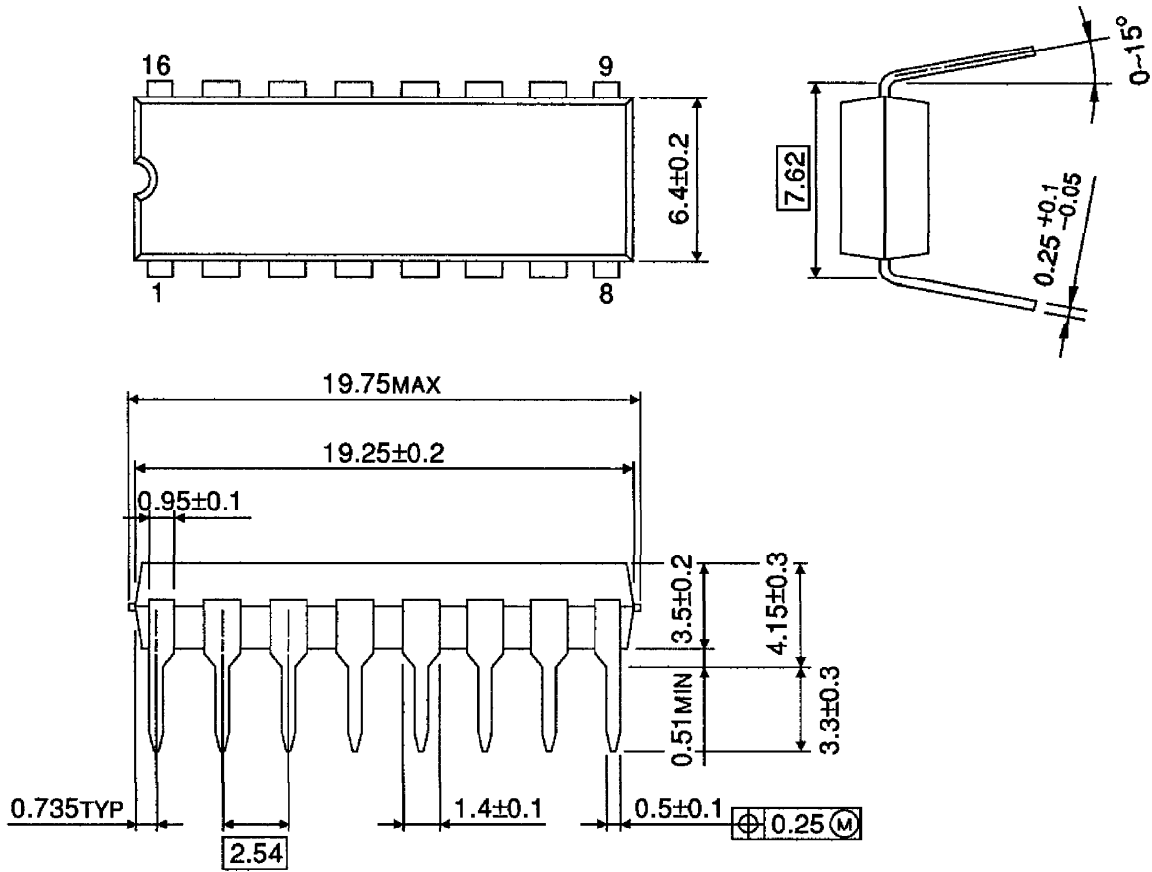


( ) : TA8532F pin No.



PACKAGE DIMENSIONS  
DIP16-P-300-2.54A

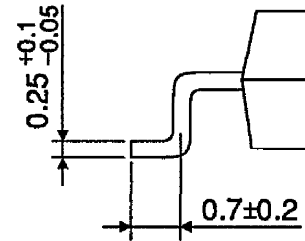
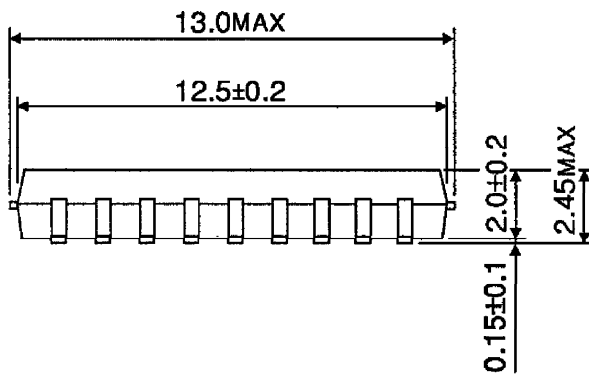
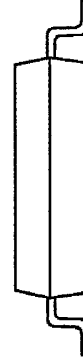
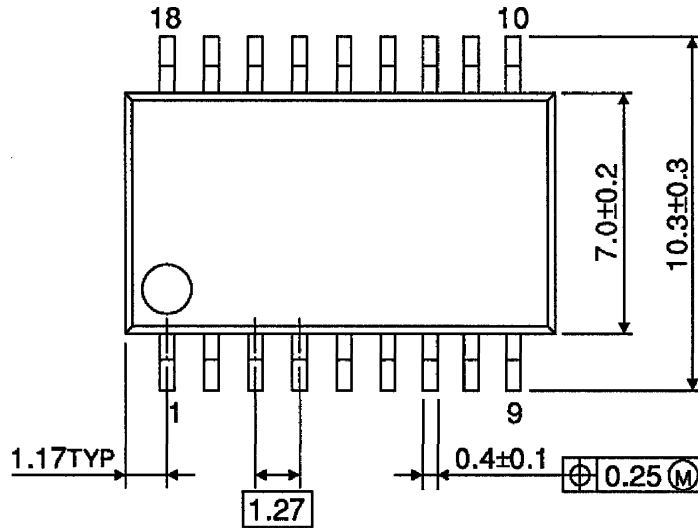
Unit : mm



Weight : 1.0g (Typ.)

PACKAGE DIMENSIONS  
SOP18-P-375-1.27

Unit : mm



Weight : 0.5g (Typ.)

**RESTRICTIONS ON PRODUCT USE**

000707EBA

- TOSHIBA is continually working to improve the quality and reliability of its products. Nevertheless, semiconductor devices in general can malfunction or fail due to their inherent electrical sensitivity and vulnerability to physical stress. It is the responsibility of the buyer, when utilizing TOSHIBA products, to comply with the standards of safety in making a safe design for the entire system, and to avoid situations in which a malfunction or failure of such TOSHIBA products could cause loss of human life, bodily injury or damage to property. In developing your designs, please ensure that TOSHIBA products are used within specified operating ranges as set forth in the most recent TOSHIBA products specifications. Also, please keep in mind the precautions and conditions set forth in the "Handling Guide for Semiconductor Devices," or "TOSHIBA Semiconductor Reliability Handbook" etc..
- The TOSHIBA products listed in this document are intended for usage in general electronics applications (computer, personal equipment, office equipment, measuring equipment, industrial robotics, domestic appliances, etc.). These TOSHIBA products are neither intended nor warranted for usage in equipment that requires extraordinarily high quality and/or reliability or a malfunction or failure of which may cause loss of human life or bodily injury ("Unintended Usage"). Unintended Usage include atomic energy control instruments, airplane or spaceship instruments, transportation instruments, traffic signal instruments, combustion control instruments, medical instruments, all types of safety devices, etc.. Unintended Usage of TOSHIBA products listed in this document shall be made at the customer's own risk.
- The products described in this document are subject to the foreign exchange and foreign trade laws.
- The information contained herein is presented only as a guide for the applications of our products. No responsibility is assumed by TOSHIBA CORPORATION for any infringements of intellectual property or other rights of the third parties which may result from its use. No license is granted by implication or otherwise under any intellectual property or other rights of TOSHIBA CORPORATION or others.
- The information contained herein is subject to change without notice.