

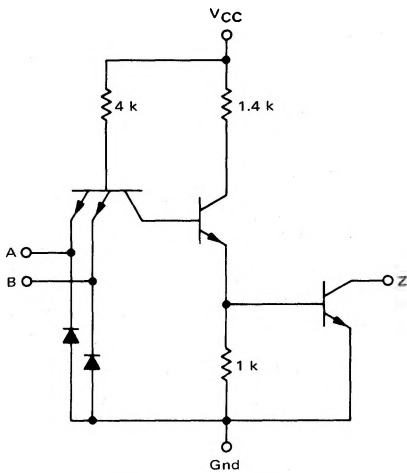
QUAD 2-INPUT "NAND" GATE  
WITH OPEN COLLECTOR

MC5400/7400 series

MC5401 • MC7401

Add Suffix F for TO-86 ceramic package (Case 607).  
Suffix L for TO-116 ceramic package (Case 632).  
Suffix P for TO-116 plastic package (Case 605) MC7401 only.

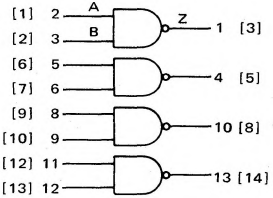
CIRCUIT SCHEMATIC  
1/4 OF CIRCUIT SHOWN



VCC = Pin 14 [4]  
Gnd = Pin 7 [11]

This device consists of four 2-input NAND gates with no output pullup circuits. It can be used where the Wired-OR function is required, or for driving discrete components.

[FLAT Pkg Pin	DIL Pkg Pin
[1]	2
[2]	3
[6]	5
[7]	6
[9]	8
[10]	9
[12]	11
[13]	12



Positive Logic:  $Z = \overline{A \cdot B}$   
Negative Logic:  $Z = A + B$

Input Loading Factor = 1  
Output Loading Factor = 10  
Total Power Dissipation = 40 mW typ/pkg  
Propagation Delay Time = 35 ns typ

SWITCHING TIME TEST CIRCUIT AND WAVEFORMS

