

# 4-channel BTL driver for CD players

## BA6997FP/BA6997FM

The BA6997FP and BA6997FM, both designed for CD players, have an internal 4-channel BTL driver and 5V regulator (which requires attached PNP transistor), as well as switches for the 5V regulator and temperature monitor pins.

### ●Applications

CD players and other optical disc devices

### ●Features

- 1) 4-channel BTL driver for CD players.
- 2) Wide dynamic range.
- 3) Internal thermal shutdown circuit.
- 4) Internal level shift circuit, for a minimum of attached components.
- 5) Internal 5V regulator with switch.

### ●Absolute maximum ratings (Ta=25°C)

Parameter	Symbol	Limits	Unit
Power supply voltage	V <sub>cc</sub>	18	V
Power dissipation	BA6997FP	Pd	mW
	BA6997FM		
Operating temperature range	T <sub>opr</sub>	-40~85	°C
Storage temperature range	T <sub>stg</sub>	-55~150	°C

\*1 When mounted to a 70 X 70 X 1.6 mm glass epoxy board with less than 3% copper foil.

\*2 Reduced by 14.4 mW for each increase in Ta of 1°C over 25°C.

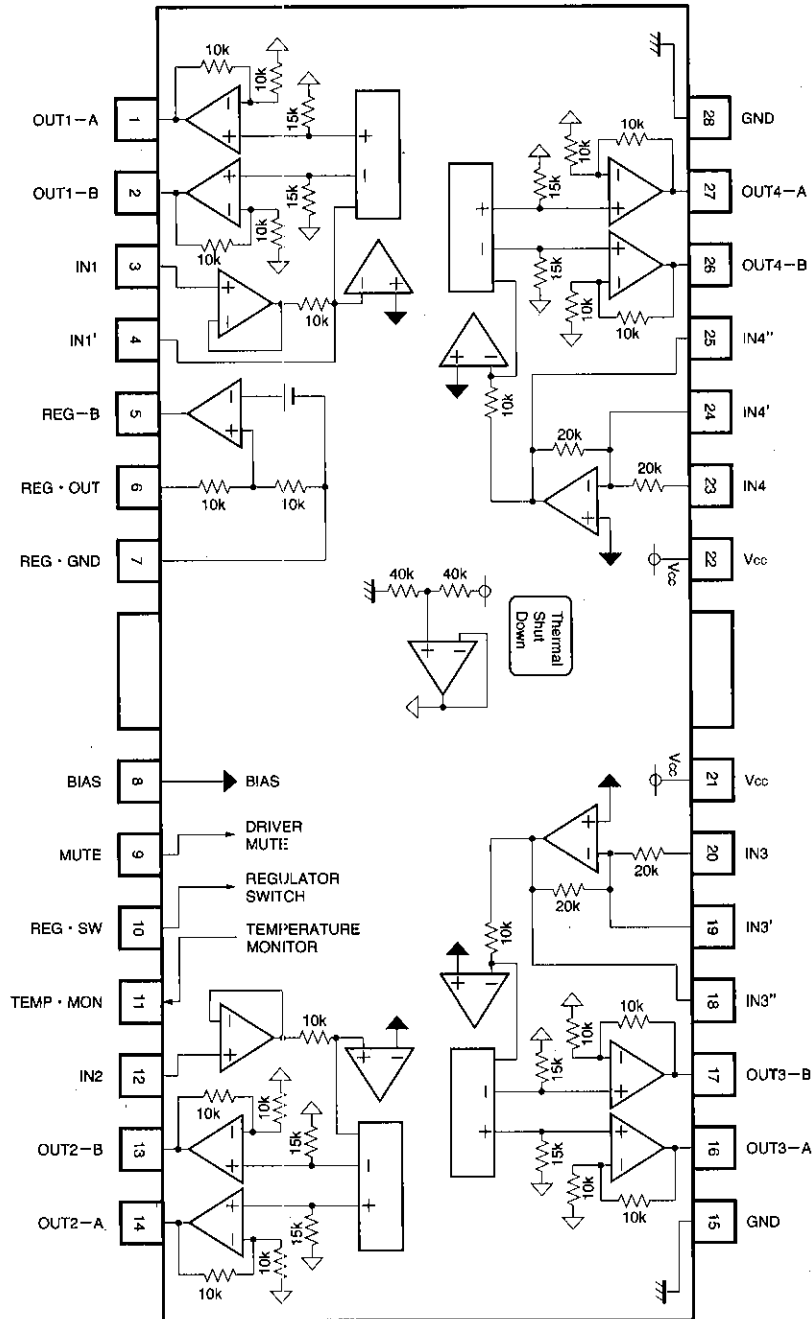
\*3 Reduced by 17.6 mW for each increase in Ta of 1°C over 25°C.

### ●Recommended operating conditions (Ta=25°C)

Parameter	Symbol	Min.	Typ.	Max.	Unit
Power supply voltage	V <sub>cc</sub>	4.5	—	12	V
	V <sub>cc</sub> *4	6.0	—	12	

\*4 When using the regulator

● Block diagram



## ● Pin descriptions

Pin No.	Pin name	Function
1	OUT1—A	Channel 1 driver output
2	OUT2—B	Channel 1 driver output
3	IN1	Channel 1 input
4	IN1'	Adjusting channel 1 gain
5	REG—B	Base connection for regulator power transistor
6	REG · OUT	Base connection for regulator output power transistor
7	REG · GND	Regulator ground/common circuit ground*1
8	BIAS	Bias input
9	MUTE	Mute control
10	REG · SW	Regulator switch
11	TEMP · MON	Temperature monitor*2
12	IN2	Channel 2 input
13	OUT2—B	Channel 2 driver output
14	OUT2—A	Channel 2 driver output
15	GND	Substrate ground
16	OUT3—A	Channel 3 driver output
17	OUT3—B	Channel 3 driver output
18	IN3''	Adjusting channel 3 gain
19	IN3'	Adjusting channel 3 gain
20	IN3	Channel 3 input
21	V <sub>cc</sub>	V <sub>cc</sub>
22	V <sub>cc</sub>	V <sub>cc</sub>
23	IN4	Channel 4 input
24	IN4'	Adjusting channel 4 gain
25	IN4''	Adjusting channel 4 gain
26	OUT4—B	Channel 4 driver output
27	OUT4—A	Channel 4 driver output
28	GND	Substrate ground

\*1 Also serves as a common circuit ground and so should be connected to the ground pin even when the regulator is not used.

\*2 See "Precautions for use."

CD/CD-ROM Drivers (4 channels)

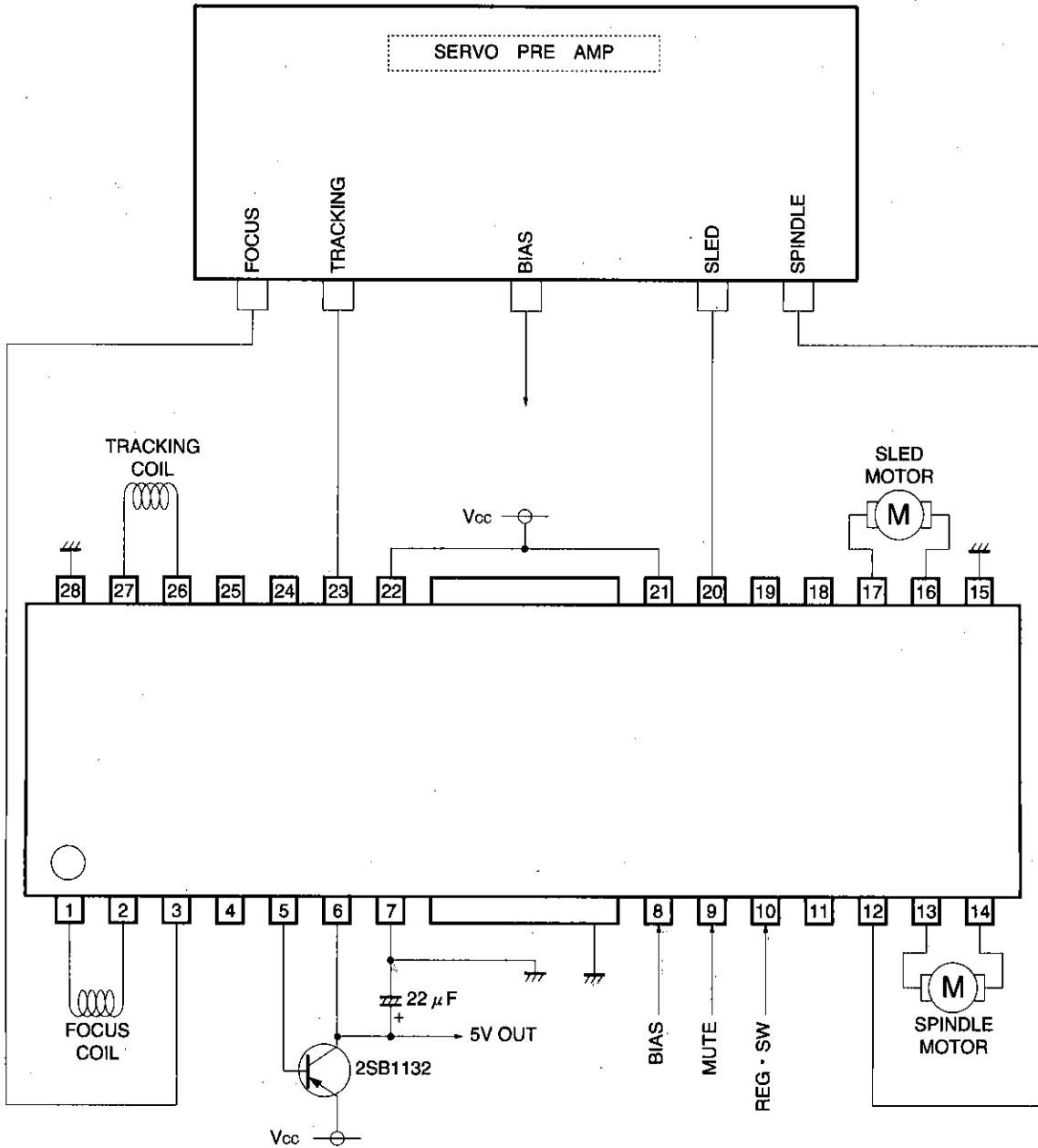
For CDs/CD-ROMs

## ● Electrical characteristics (Unless otherwise noted, Ta=25°C, Vcc=8V, f=1kHz, RL=8Ω)

Parameter	Symbol	Min.	Typ.	Max.	Unit	Conditions	Measurement Circuit
Quiescent current 1	IQ1	5.5	11.0	14.5	mA	No load, mute off, regulator on	Fig. 1
Quiescent current 2	IQ2	—	—	6.0	mA	No load, mute on, regulator off	Fig. 1
〈Drivers〉							
Output offset voltage	VOO	-100	—	100	mV	Preamplifier buffer configured	Fig. 1
Max. output amplitude	VOM	5.0	5.4	—	V		Fig. 1
Closed loop voltage gain 1	GVC1	14.1	15.6	17.1	dB	Vin = 0.1 Vrms, channels 1 and 2	Fig. 1
Closed loop voltage gain 2	GVC2	13.6	15.6	17.6	dB	Vin = 0.1 Vrms, channels 3 and 4	Fig. 1
MUTE-OFF voltage	VMOFF	2.0	—	—	V		Fig. 1
MUTE-ON voltage	VMON	—	—	0.5	V		Fig. 1
Ripple rejection ratio	RR	—	60	—	dB	Vin=0.1Vrms, 100Hz	Preamplifier buffer configured
Interchannel crosstalk	CT	—	60	—	dB	Vin=0.1Vrms, 1kHz	
〈Pre-stage operational amplifier〉							
Input bias current	IB	—	—	300	nA		Fig. 1
Common mode input voltage	VICM	0	—	6.8	V		Fig. 1
Output voltage, H level	VOHOP	6.6	7.1	—	V		Fig. 1
Output voltage, L level	VOLOP	—	0.8	1.1	V		CH1
Output current, H level	IOHOP	2	—	—	mA	Ground at 100Ω output	
Output current, L level	IOLOP	5	—	—	mA	Vcc at 100Ω output	CH2
Slew rate	SROP	—	2	—	V/μs	100 kHz sq. wave, 3 Vp-p output	
〈5 V regulator〉							
Output voltage	VREG	4.75	5.00	5.25	V	IL=100mA	Fig. 1
Output load	ΔVRL	-50	0	10	mV	IL=0~200mA	Fig. 1
Supply voltage	ΔVVcc	-10	0	25	mV	(Vcc=6~9V) IL=100mA	Fig. 1
Ripple rejection ratio	RRREG	—	50	—	dB	VW=1Vp-p 1kHz	Fig. 1
Regulator switch-on voltage	VREGON	2.0	—	—	V		Fig. 1
Regulator switch-off voltage	VREGOFF	—	—	0.5	V		Fig. 1

○Not designed for radiation resistance.

● Application example



CD/CD-ROM Drivers (4 channels)

For CDs/CD-ROMs

Fig. 1

● Operation notes

- (1) The BA6997FP and BA6997FM have an internal thermal shutdown circuit. Output current is muted when the chip temperature exceeds 175°C (typically).
- (2) The output current can be muted by opening the mute pin (9 pin) voltage or lowering it below 0.5V. This pin should be pulled up above 2.0V during normal operation. When muting occurs, the output pins output the internal bias voltage, roughly  $V_{CC}/2$ .
- (3) The regulator can be turned off by opening the regulator switch (10 pin) or lowering it below 0.5V. This pin should be pulled up above 2.0V during normal operation.
- (4) Muting also occurs when the bias pin (8 pin) voltage drops below 1.4V (typically). This pin should stay above 1.6V during normal operation.
- (5) Attach a bypass capacitor (roughly 0.1  $\mu F$ ) to the power supply, at the base of the IC.
- (6) Be sure to connect the radiating fin to an external ground.

- (7) The capacitor between regulator output (6 pin) and REGGND (7 pin) also serves to prevent oscillation of the IC, so select one with good temperature characteristics.
- (8) We recommend 2SB1132 as the PNP transistor to attach to the regulator.
- (9) The internal circuitry of the temperature monitor pin is shown in the diagram below. Note that the internal reference voltage is also used for the 5V regulator, which will cease to operate normally when the temperature monitor pin emits a current exceeding the regulator's capacity. Set I to several dozen  $\mu A$ .

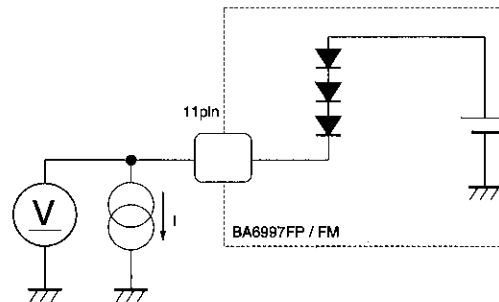


Fig. 2

● Electrical characteristic curves

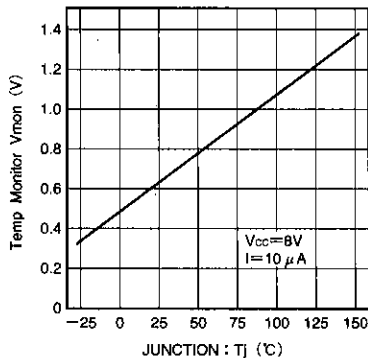


Fig. 3 Tj vs. Vmon

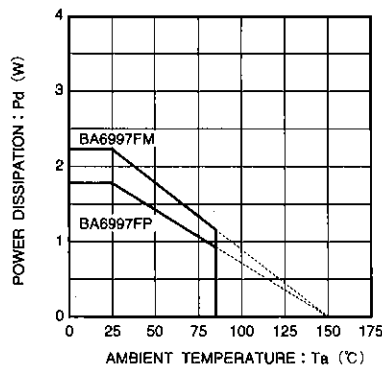


Fig. 4 Thermal derating curve

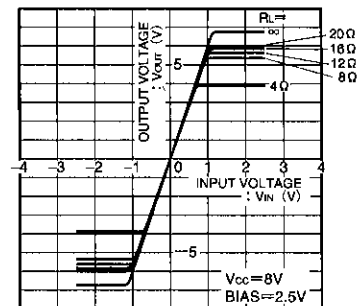


Fig. 5 Driver I/O characteristics (variable load)

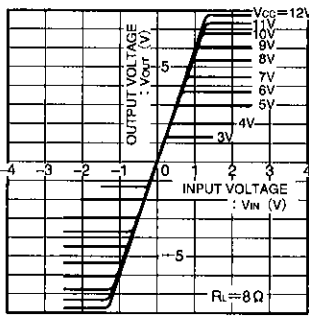


Fig. 6 Driver I/O characteristics (variable Vcc)

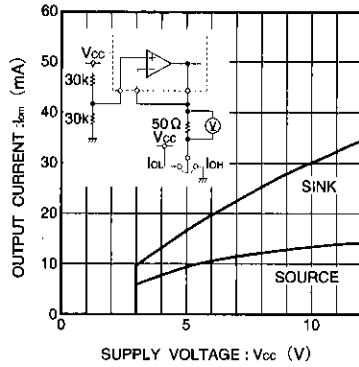
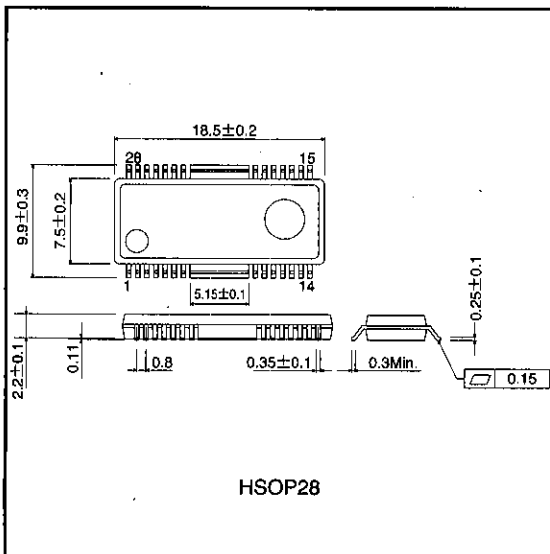


Fig. 7 Supply voltage vs. operational amplifier output drive current

● External dimensions (Units: mm)



CD/CD-ROM Drivers (4 channels)

For CDs/CD-ROMs

## Notes

- The contents described in this catalogue are correct as of March 1997.
- No unauthorized transmission or reproduction of this book, either in whole or in part, is permitted.
- The contents of this book are subject to change without notice. Always verify before use that the contents are the latest specifications. If, by any chance, a defect should arise in the equipment as a result of use without verification of the specifications, ROHM CO., LTD., can bear no responsibility whatsoever.
- Application circuit diagrams and circuit constants contained in this data book are shown as examples of standard use and operation. When designing for mass production, please pay careful attention to peripheral conditions.
- Any and all data, including, but not limited to application circuit diagrams, information, and various data, described in this catalogue are intended only as illustrations of such devices and not as the specifications for such devices. ROHM CO., LTD., disclaims any warranty that any use of such device shall be free from infringement of any third party's intellectual property rights or other proprietary rights, and further, assumes absolutely no liability in the event of any such infringement, or arising from or connected with or related to the use of such devices.
- Upon the sale of any such devices; other than for the buyer's right to use such devices itself, resell or otherwise dispose of the same; no express or implied right or license to practice or commercially exploit any intellectual property rights or other proprietary rights owned or controlled by ROHM CO., LTD., is granted to any such buyer.
- The products in this manual are manufactured with silicon as the main material.
- The products in this manual are not of radiation resistant design.

The products listed in this catalogue are designed to be used with ordinary electronic equipment or devices (such as audio-visual equipment, office-automation equipment, communications devices, electrical appliances, and electronic toys). Should you intend to use these products with equipment or devices which require an extremely high level of reliability and the malfunction of which would directly endanger human life (such as medical instruments, transportation equipment, aerospace machinery, nuclear-reactor controllers, fuel controllers, or other safety devices) please be sure to consult with our sales representatives in advance.

- Notes when exporting
  - It is essential to obtain export permission when exporting any of the above products when it falls under the category of strategic material (or labor) as determined by foreign exchange or foreign trade control laws.
  - Please be sure to consult with our sales representatives to ascertain whether any product is classified as a strategic material.