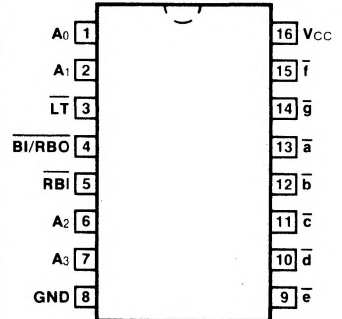


54LS/74LS347

BCD TO 7-SEGMENT DECODER/DRIVER

CONNECTION DIAGRAM PINOUT A

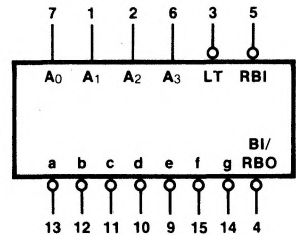


DESCRIPTION — The '347 is the same as the '47 except that the Output OFF Voltage, V_{OH} , is specified as 7.0 V rather than 15 V, with the same I_{OH} limit of 250 μ A. For all other information please refer to the '47 data sheet.

ORDERING CODE: See Section 9

PKGS	PIN OUT	COMMERCIAL GRADE	MILITARY GRADE	PKG TYPE
		$V_{CC} = +5.0\text{ V} \pm 5\%$, $T_A = 0^\circ\text{ C to } +70^\circ\text{ C}$	$V_{CC} = +5.0\text{ V} \pm 10\%$, $T_A = -55^\circ\text{ C to } +125^\circ\text{ C}$	
Plastic DIP (P)	A	74LS347PC		9B
Ceramic DIP (D)	A	74LS347DC	54LS347DM	7B
Flatpak (F)	A	74LS347FC	54LS347FM	4L

LOGIC SYMBOL



V_{CC} = Pin 16
GND = Pin 8

INPUT LOADING/FAN-OUT: See Section 3 for U.L. definitions

PIN NAMES	DESCRIPTION	54/74LS HIGH/LOW
$A_0 - A_3$	BCD Inputs	0.5/0.25
\overline{RBI}	Ripple Blanking Input (Active LOW)	0.5/0.25
LT	Lamp Test Input (Active LOW)	0.5/0.25
$\overline{BI}/\overline{RBO}$	Blanking Input (Active LOW) or Ripple Blanking Output (Active LOW)	-/0.75 1.25/2.0 (1.0)
$\overline{a} - \overline{g}$	Segment Outputs (Active LOW)	OC*/15 (7.5)

*OC — Open Collector